



State Transportation
Commission

2021 TWELVE YEAR PROGRAM UPDATE REGIONAL TRANSPORTATION SURVEY SUMMARY

LEBANON COUNTY METROPOLITAN PLANNING ORGANIZATION (LEBCO MPO)

A CLOSER LOOK AT YOUR REGION

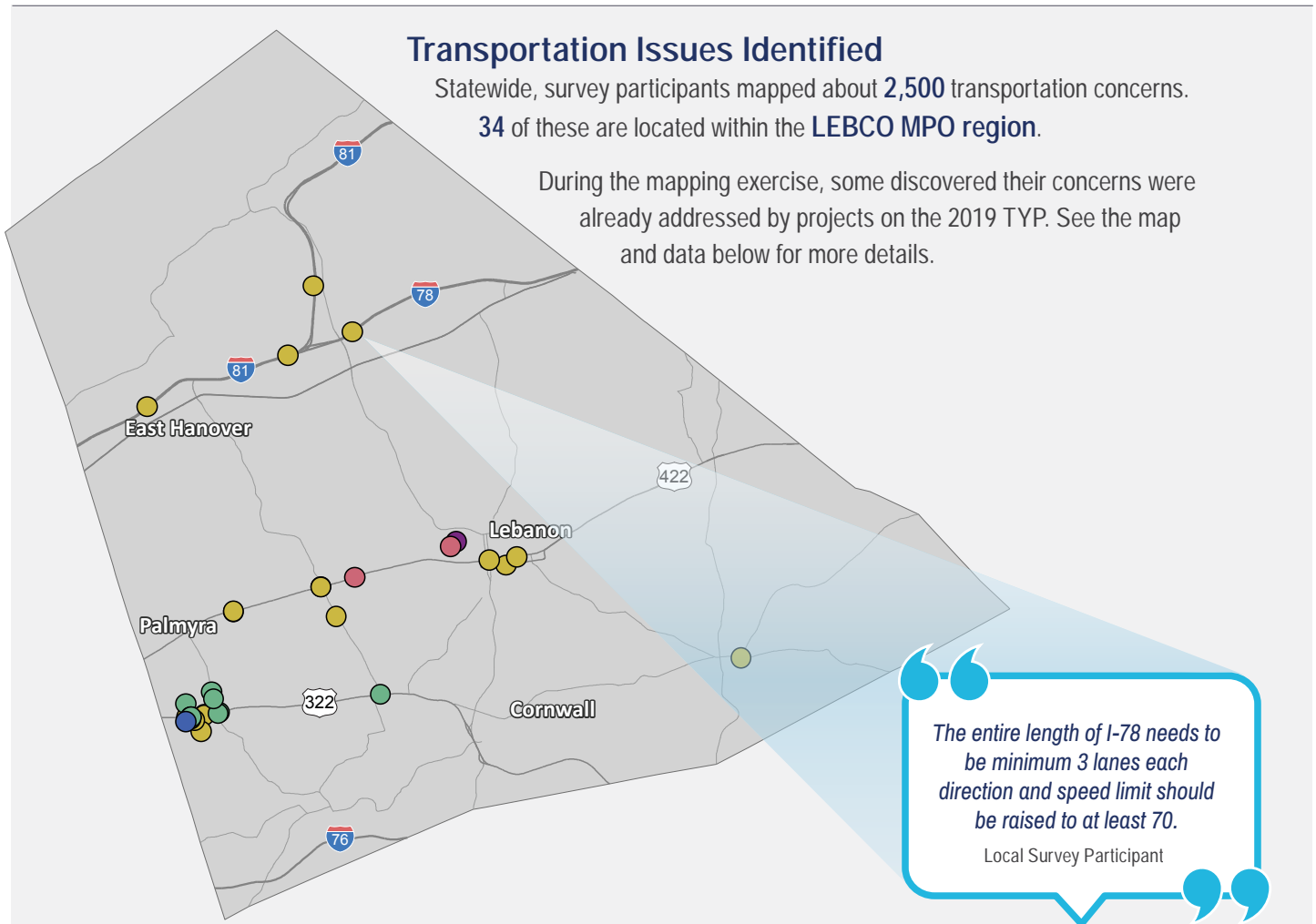
The State Transportation Commission's 45-day open public comment period for the 2021 Twelve Year Program (TYP) Update was held March 11 through April 26, 2019. During the comment period, the public had the opportunity to take the Transportation Survey and participate in an online public meeting on either a webinar platform or Facebook Live. All public feedback received was analyzed to better understand public priorities and transportation trends.

Transportation Issues Identified

Statewide, survey participants mapped about **2,500** transportation concerns.

34 of these are located within the **LEBCO MPO** region.

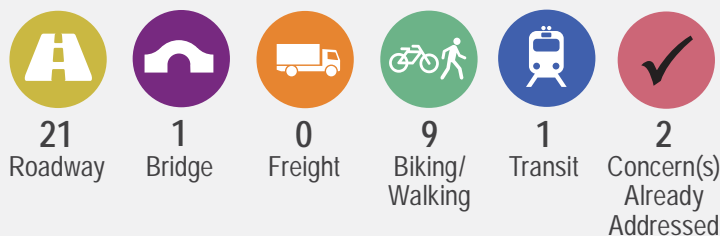
During the mapping exercise, some discovered their concerns were already addressed by projects on the 2019 TYP. See the map and data below for more details.



The entire length of I-78 needs to be minimum 3 lanes each direction and speed limit should be raised to at least 70.
Local Survey Participant

Number Of Issues Identified

The icons below correspond with the same color dots on the map.



2019 TYP projects that addressed public concerns

- US 422 Resurfacing
- Route 4001 Resurfacing



State Transportation
Commission

2021 TWELVE YEAR PROGRAM UPDATE REGIONAL TRANSPORTATION SURVEY SUMMARY

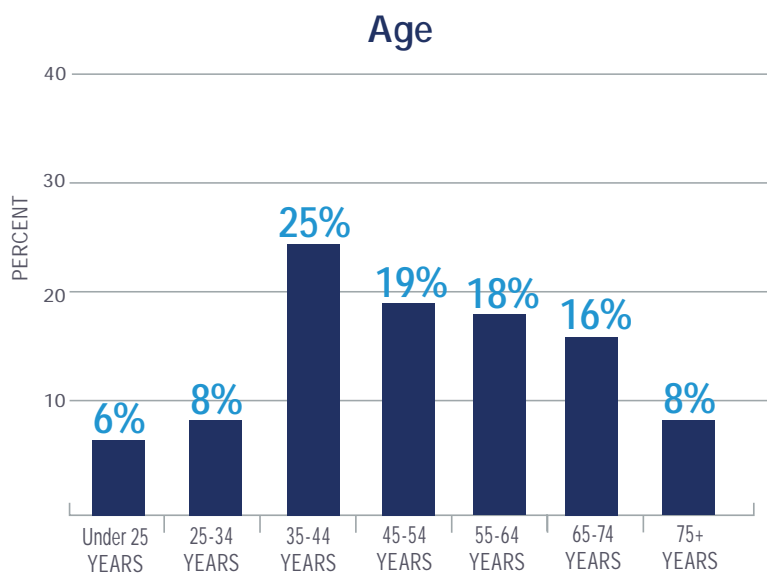
LEBANON COUNTY METROPOLITAN PLANNING ORGANIZATION (LEBCO MPO)

ABOUT THE SURVEY PARTICIPANTS IN YOUR REGION

Over 6,000 individuals participated in the online survey statewide, and 65 of the survey participants identified with the LEBCO MPO region through feedback provided. Learn more about the participants from this region.

Male	35	56%
Female	25	40%
Third gender/nonconforming	1	2%
Prefer to self describe	0	0%
Prefer not to answer	1	2%

Responses to demographic questions were optional.



Top Transportation Modes



DRIVE ALONE



WALKING



BICYCLING

Transportation Priorities Ranking



#1 ROAD PAVEMENT

Repairing, restoring, reconstructing and maintaining Pennsylvania's 120,000 miles of state and local roadways to improve your travel



#2 TRAFFIC FLOW

Using technology to improve traffic flow and construction of new roads and additional travel lanes to safely move people and goods more efficiently



#3 BRIDGES

Repairing, replacing and maintaining Pennsylvania's 31,000 state and local bridges

4

WALKING

Accessible and connected routes to get you where you need to go safely

5

BICYCLING

Safe bicycle routes and facilities throughout the commonwealth to get you where you need to go

6

INTERSTATE HIGHWAY

Specific, prioritized investments in reconstructing Pennsylvania's 1,868 miles of interstate highways

7

PASSENGER RAIL

Intercity and commuter rail service across Pennsylvania with out-of-state connections

8

TRANSIT

Accessible and timely public transportation that covers an extensive service area and crosses regions

9

AVIATION

Modern facilities, operations and a wide range of commercial airline choices at airports

10

FREIGHT

Modern highways, railways, airports and waterways to support the economy and ensure the efficient movement of goods and services