



State Transportation
Commission

2021 TWELVE YEAR PROGRAM UPDATE STATEWIDE TRANSPORTATION SURVEY SUMMARY



FOR TELLING US WHAT YOU THINK ABOUT TRANSPORTATION IN PA

Thank you for participating in the biennial Twelve Year Program Update. Our *goal* was to receive input from more than 6,000 of you. **AND YOU MADE IT HAPPEN!** Your input will help align our transportation priorities with your needs. Read below to learn about the outreach process.

OUTREACH TECHNIQUES

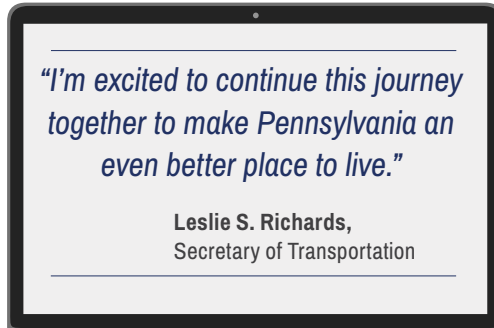
We provided information to you through [www.TalkPA Transportation.com](http://www.TalkPATransportation.com), **social media**, **email blasts** and the **media**. We also provided an online toolkit full of outreach resources for our stakeholders.



ONLINE PUBLIC MEETING



On **March 20, 2019**, we hosted an **online public meeting** on a webinar platform. For the **FIRST time**, it was also available through **Facebook Live**. We had **over 2,000 meeting participants** from both the **webinar** and **Facebook Live**. You asked **84 questions** during the meeting that we answered and posted to our website.



Leslie S. Richards,
Secretary of Transportation

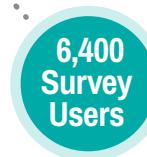
TRANSPORTATION SURVEY

The Transportation **Survey** was **available** March 11 – April 26, 2019. It **asked for your input** on **transportation modes**, **identifying your priorities** and **budget**. It also provided a map for specific transportation issues.



SURVEY RESULTS

We **received input from about 6,400 of you!** We also received almost 2,500 mapped issues; 425 of them are already being addressed by planned projects in the 2019 Twelve Year Program.



A *Journey* 2021 TWELVE YEAR PROGRAM UPDATE INTO THE SURVEY RESULTS

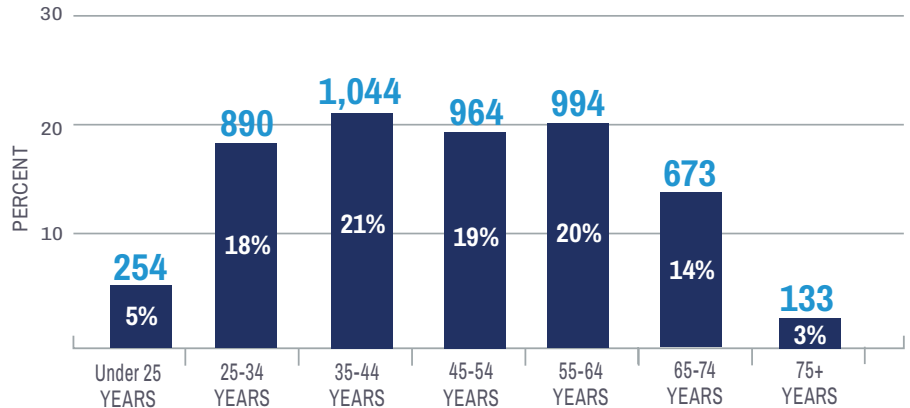


WE REACHED OUR GOAL OF 6,000 Participants

- About 6,400 participants
- Almost 90% identified as the general public

Male	2,738	55%
Female	2,094	42%
Third gender/nonconforming	28	1%
Prefer to self describe	8	0%
Prefer not to answer	119	2%

AGE GROUPS OF RESPONDENTS



NOTE: Responses to demographic questions were optional.

How Do You Travel?

- We asked you to tell us how often you use different modes of transportation. 77% of you reported driving alone, 51% reported walking and/or bicycling, and 19% reported using public transit and/or passenger rail often or every day.
- Public transit and passenger rail were less frequently reported, however they are still an important necessity to many in Pennsylvania. Public transit connects communities and creates job access.
- Some of you use other modes of transportation such as boating, horse transportation and other modes.

THIS GRAPHIC LISTS THE MODES IN ORDER OF HOW OFTEN SURVEY PARTICIPANTS USE THEM



What Are Your Transportation Priorities?

We asked you to rank 10 transportation priorities and you ranked road pavement as most important to you.



#1 ROAD PAVEMENT

Repairing, restoring, reconstructing and maintaining Pennsylvania's 120,000 miles of state and local roadways to improve your travel



#2 TRAFFIC FLOW

Using technology to improve traffic flow and construction of new roads and additional travel lanes to safely move people and goods more efficiently



#3 BRIDGES

Repairing, replacing and maintaining Pennsylvania's 31,000 state and local bridges

4 INTERSTATE HIGHWAY

Specific, prioritized investments in reconstructing Pennsylvania's 1,868 miles of interstate highways

5 WALKING

Accessible and connected routes to get you where you need to go safely

6 TRANSIT

Accessible and timely public transportation that covers an extensive service area and crosses regions

7 BICYCLING

Safe bicycle routes and facilities throughout the commonwealth to get you where you need to go

8 PASSENGER RAIL

Intercity and commuter rail service across Pennsylvania with out-of-state connections

9 AVIATION

Modern facilities, operations and a wide range of commercial airline choices at airports

10 FREIGHT

Modern highways, railways, airports and waterways to support the economy and ensure the efficient movement of goods and services

We also gave you the chance to identify priorities we didn't list. The most common entries included:



ELECTRIC VEHICLE UTILITIES



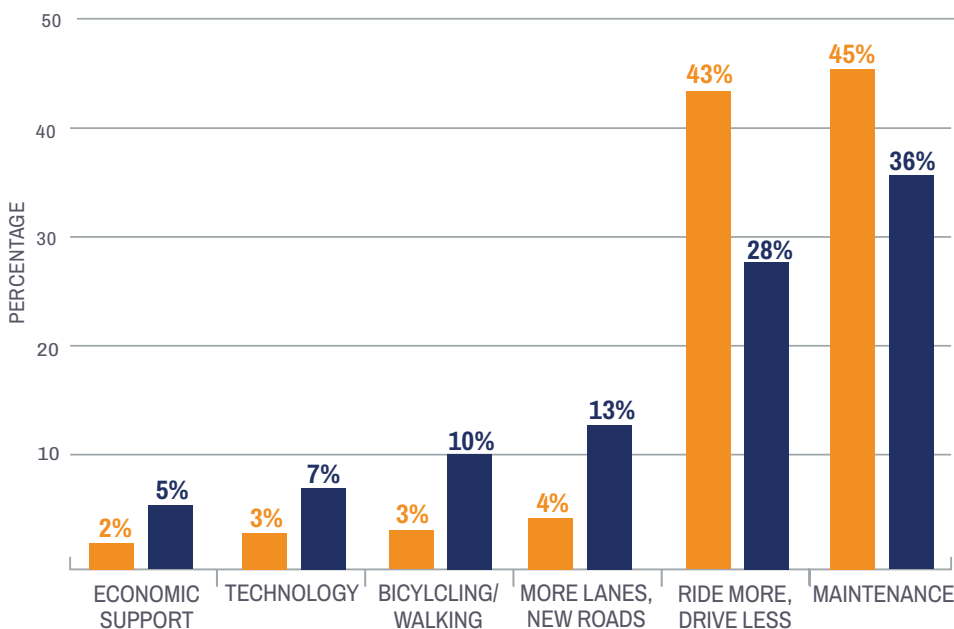
RENEWABLE ENERGY SOURCES



TRANSPORTATION DEMAND MANAGEMENT

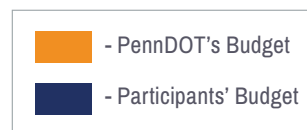


ACCESSIBILITY



How Much Would You Spend?

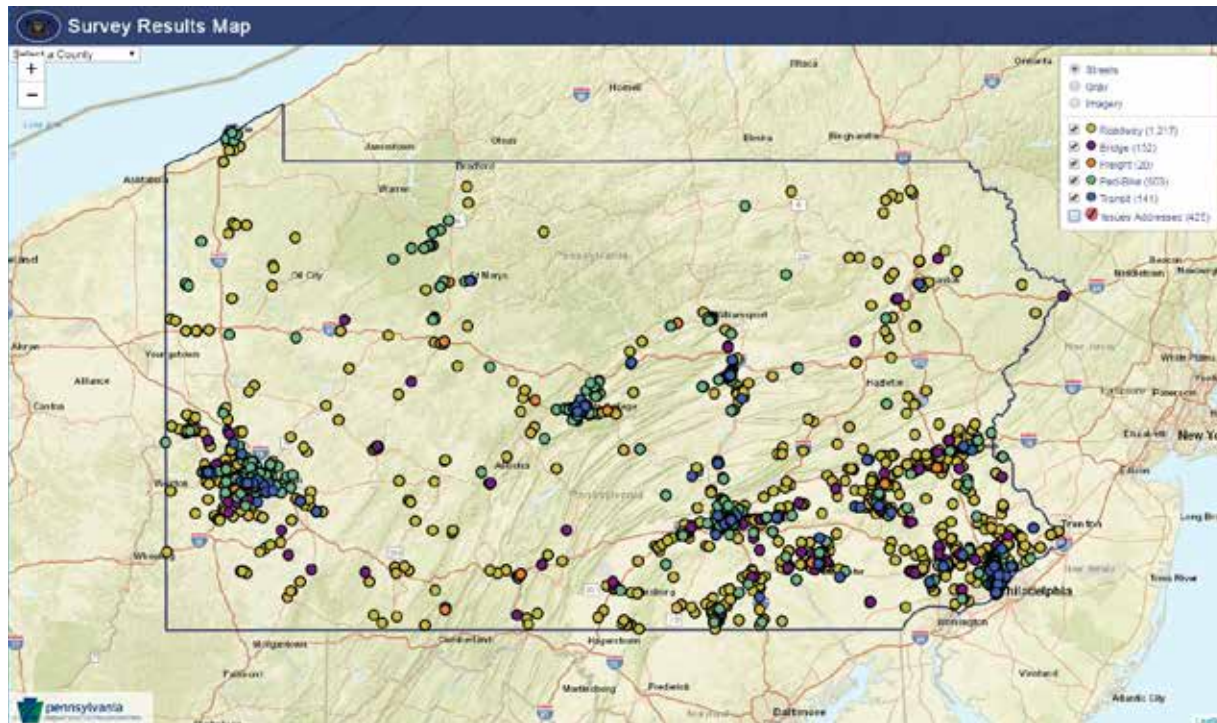
We asked you to distribute our budget between six funding categories. Your responses show that you want more money to be spent on technology; pedestrian and bicycle access; and more lanes, new roads. You can use this chart to see how your responses compare with our current budget.





What Are Your Transportation Issues?

We asked you to map and describe your transportation issues. Of nearly 2,500 transportation issues submitted statewide, almost 50% were roadway concerns, followed by pedestrian and bicycle issues at 20%. You determined about 17% of your issues were already being addressed by planned projects, compared to only 14% being addressed in 2017. The planned project data was generated through PennDOT's One Map, which is a web-based GIS mapping application available to you at <https://www.dot7.state.pa.us/OneMap>.



EXPLORE THE MAP

NEXT STEPS:

Find Your Region's Results

This summary provides an overview of Pennsylvania's statewide 2021 Twelve Year Program Update transportation survey results. Visit the STC website, www.TalkPATransportation.com, to take a closer look at the survey results for your region.

Get Involved Locally

Thank you for your input and please continue to share your priorities for transportation investment.

Pennsylvania's 24 Planning Partners host public meetings and invite input on the development of regional transportation improvement plans. Visit the website www.TalkPATransportation.com/planningpartner to find your Planning Partner. Your feedback is necessary to ensure our transportation system is safe and efficient.

2021 TWELVE YEAR PROGRAM UPDATE

2017 vs 2019 STATEWIDE SURVEY RESULTS COMPARISON



State Transportation
Commission



About the Survey Participants

2017

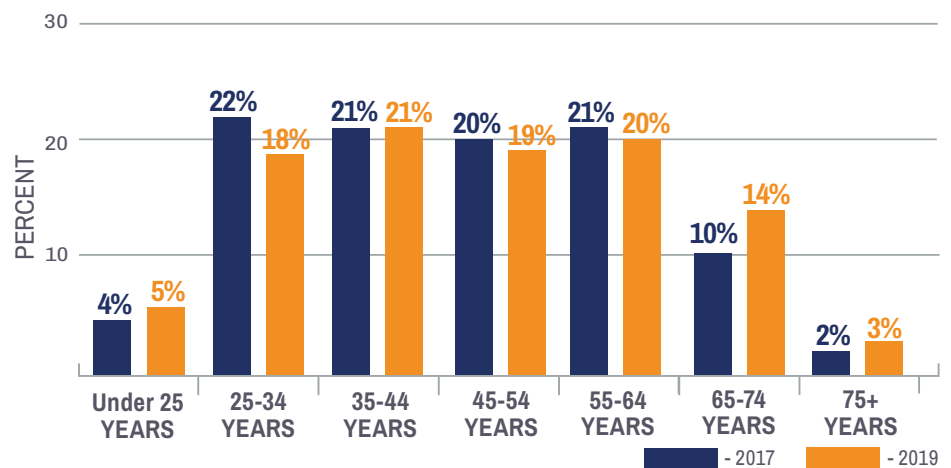
Male	52%
Female	45%
Third gender/nonconforming	*N/A
Prefer to self describe	*N/A
Prefer not to answer	3%

2019

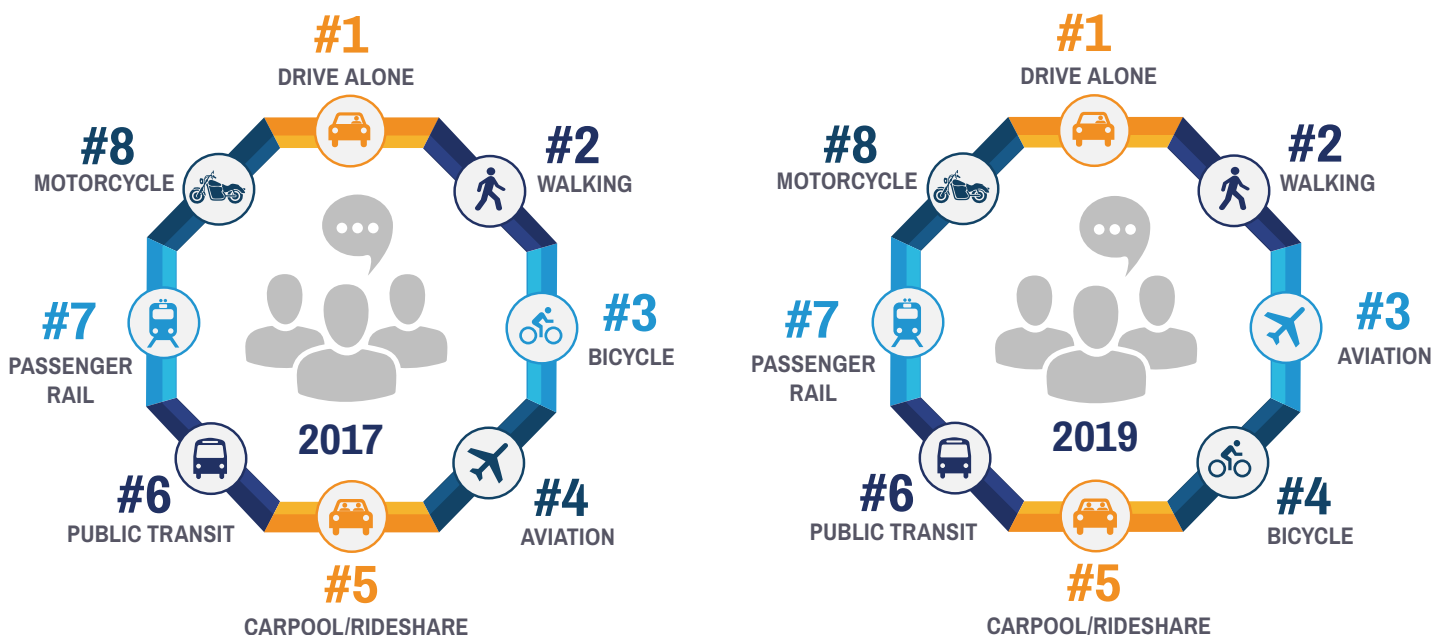
Male	55%
Female	42%
Third gender/nonconforming	1%
Prefer to self describe	0%
Prefer not to answer	2%

*N/A = Not Available

AGE GROUPS OF RESPONDENTS



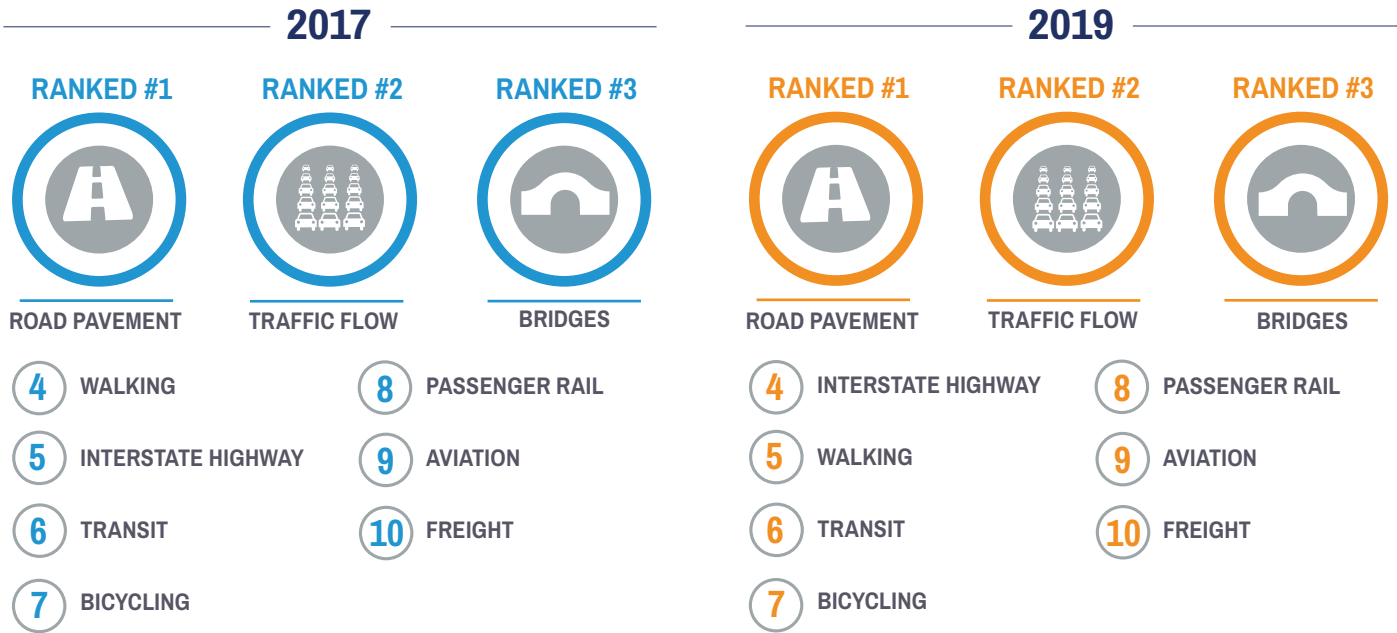
Modes of Travel Used Most Frequently



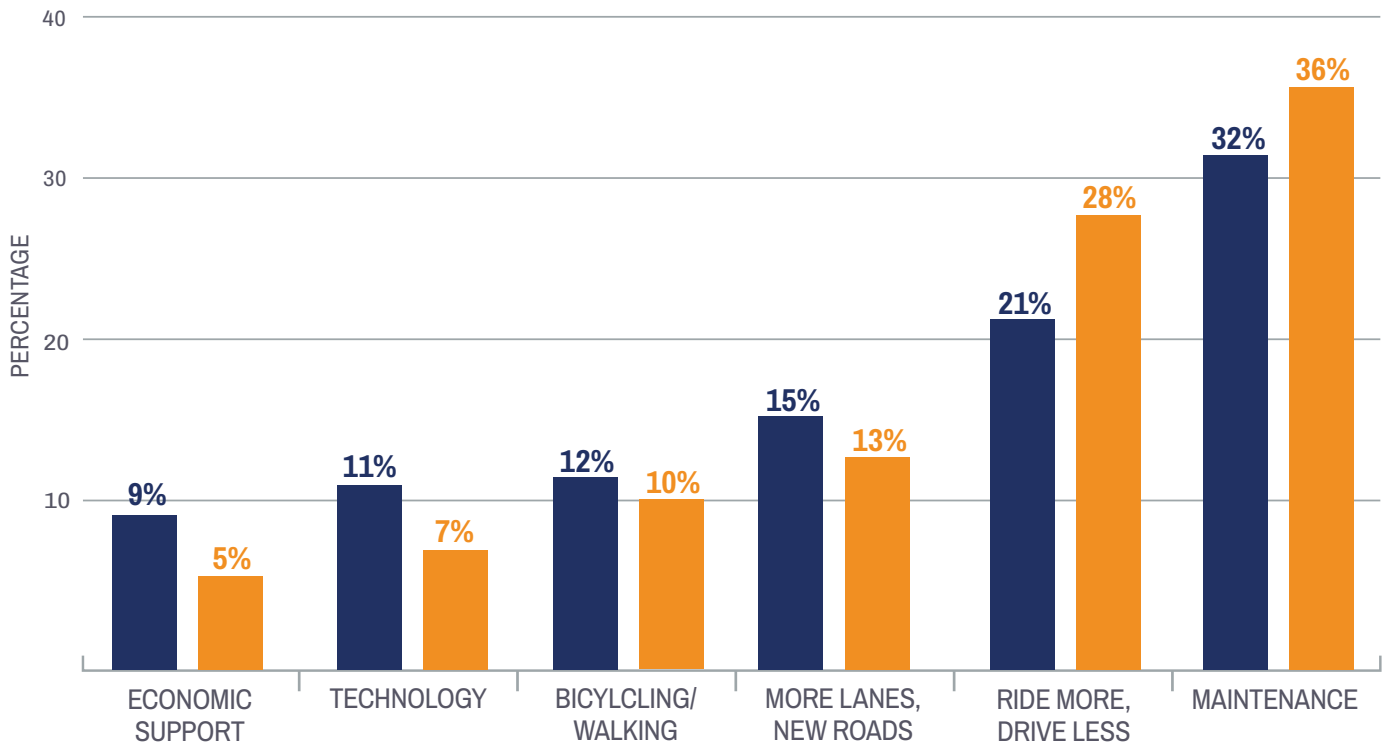
2021 TWELVE YEAR PROGRAM UPDATE

2017 vs 2019 STATEWIDE SURVEY RESULTS COMPARISON

Ranked Transportation Priorities



Funding/Budget



- 2017 Participants' Budget
 - 2019 Participants' Budget