

# LEHIGH VALLEY TRANSPORTATION STUDY (LVTS)



State Transportation Commission

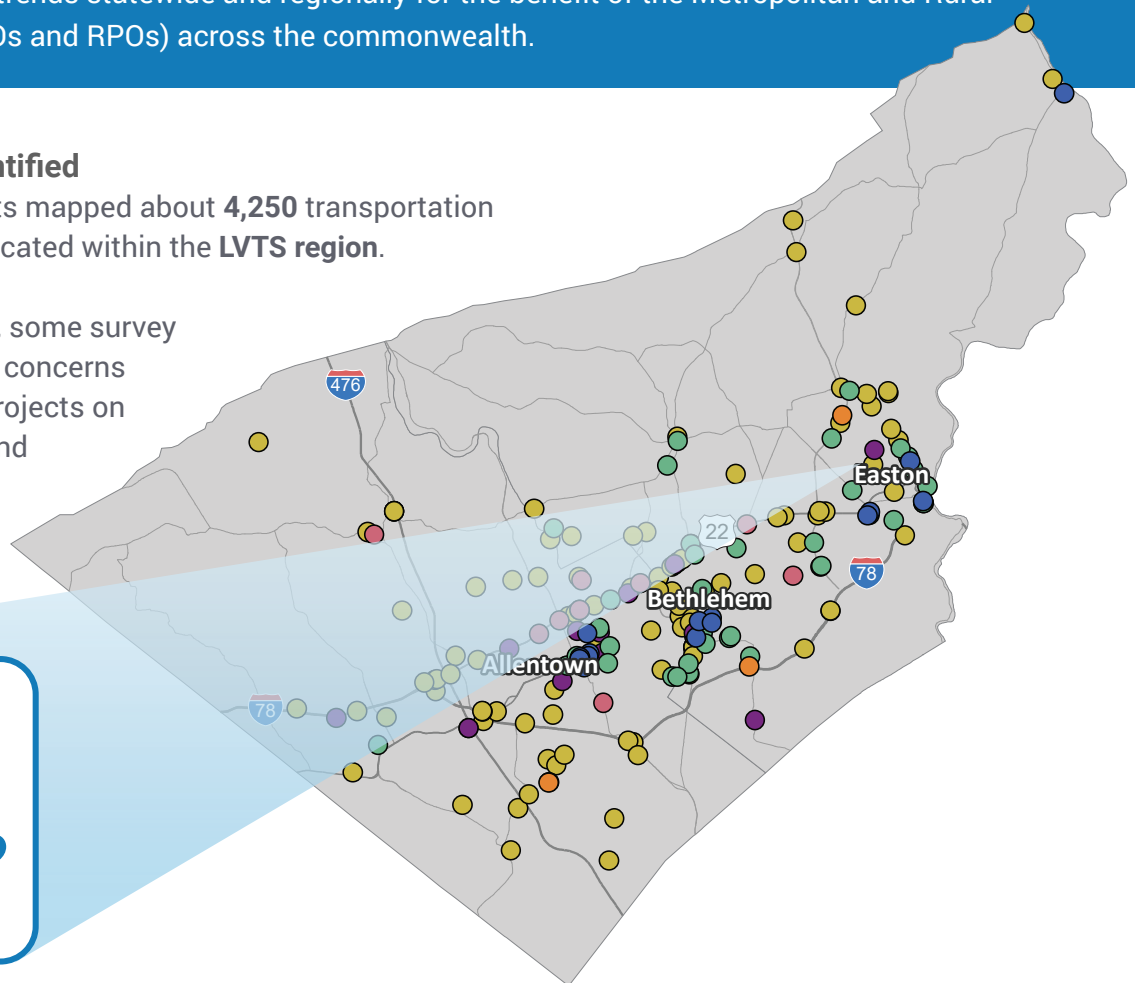
## A CLOSER LOOK AT YOUR REGION

The State Transportation Commission held a 60-day Public Comment Period for the 2025 12-Year Program (TYP) Update from March 1, through April 30, 2023. The public was invited to provide input through taking the Transportation Survey and participating in an Online Public Forum. The Online Public Forum, held on Wednesday, April 12, was broadcasted on a webinar platform with a call-in option, and on Facebook Live. The public could also request assistance to participate in the Survey or Public Forum by contacting PennDOT's Program Center by email or phone. All public feedback received was reviewed and compiled to convey current transportation priorities and trends statewide and regionally for the benefit of the Metropolitan and Rural Planning Organizations (MPOs and RPOs) across the commonwealth.

### Transportation Issues Identified

Statewide, survey participants mapped about **4,250** transportation concerns, **188** of these are located within the **LVTS region**.

During the mapping exercise, some survey participants discovered their concerns were already addressed by projects on the 2023 TYP. See the map and data below for more details.

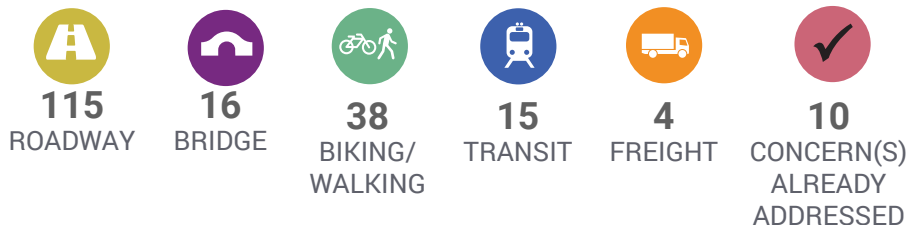


“ Dangerous intersection due to increased amount of traffic. Turning lanes, three-way stop signs, or a traffic signal would remedy the situation. ”

Local Survey Participant

### Number of Issues Identified

The icons below correspond with the same color dots on the map.



### Examples of a 2023 TYP Project that Addressed Public Concerns

US 22 WIDENING

LEHIGH STREET & RACE STREET INTERSECTION IMPROVEMENTS

SR 22 / SR 191 INTERCHANGE IMPROVEMENTS



2025 12-Year Program Update: Regional Transportation Survey Summary  
**LEHIGH VALLEY TRANSPORTATION STUDY (LVTS)**

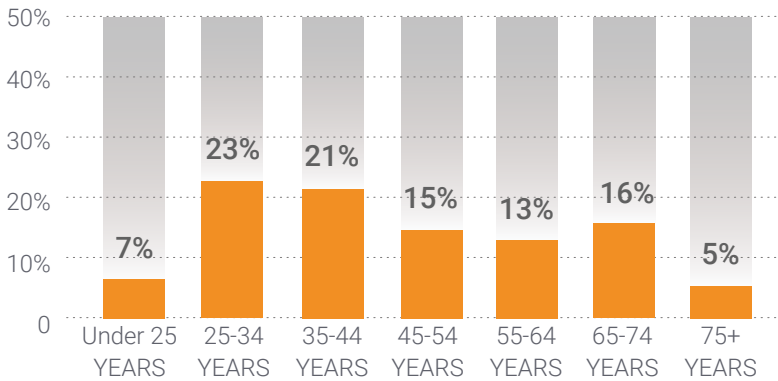
State Transportation Commission

**ABOUT THE SURVEY PARTICIPANTS IN YOUR REGION**

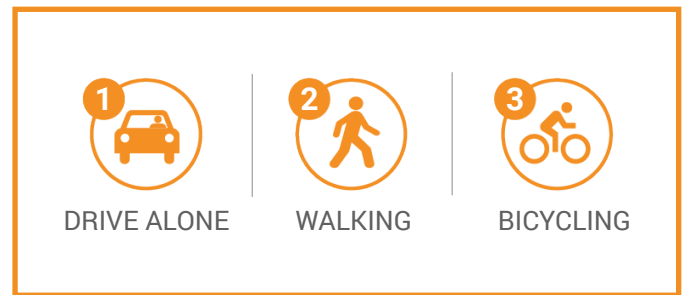
Over 10,000 individuals participated in the survey statewide, and **385** of the survey participants identified with the **LVTS region** through feedback provided. Learn more about the participants from this region.

Male	229	64%
Female	117	33%
Third gender/Nonconforming	5	1%
I prefer to self-describe	0	0%
I prefer not to answer	8	2%

**Age**



**Top Transportation Modes**



**Transportation Priorities Ranking**

- 1 ROAD PAVEMENT**  
Repairing, restoring, reconstructing, and maintaining Pennsylvania's 120,000 miles of state and local roadways to improve your travel
- 2 TRAFFIC FLOW**  
Using technology to improve traffic flow and construction of new roads and additional travel lanes to safely move people and goods more efficiently
- 3 BRIDGES**  
Repairing, replacing, and maintaining Pennsylvania's 31,000 state and local bridges
- 4 INTERSTATE HIGHWAY**  
Specific, prioritized investments in reconstructing Pennsylvania's 1,868 miles of interstate highway
- 5 WALKING**  
Accessible and connected routes to get you where you need to go safely
- 6 PASSENGER RAIL**  
Intercity and commuter rail service across Pennsylvania with out-of-state connections
- 7 BICYCLING**  
Safe bicycle routes and facilities throughout the commonwealth to get you where you need to go
- 8 TRANSIT**  
Accessible and timely public transportation that covers an extensive service area and crosses regions
- 9 FREIGHT**  
Modern highways, railways, airports, and waterways to support the economy and ensure the efficient movement of goods and services
- 10 AVIATION**  
Modern facilities, operations, and a wide range of commercial airline choices at airports