



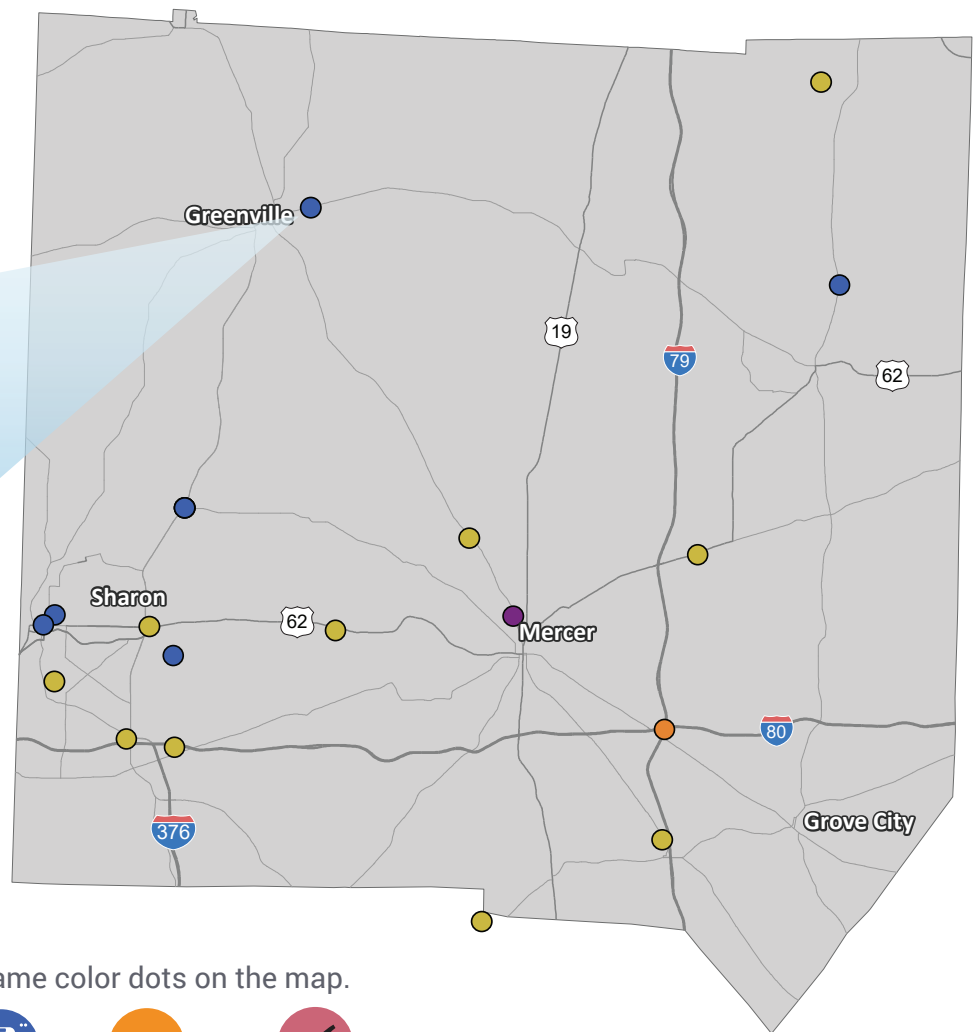
A CLOSER LOOK AT YOUR REGION

The State Transportation Commission held a 60-day Public Comment Period for the 2025 12-Year Program (TYP) Update from March 1, through April 30, 2023. The public was invited to provide input through taking the Transportation Survey and participating in an Online Public Forum. The Online Public Forum, held on Wednesday, April 12, was broadcasted on a webinar platform with a call-in option, and on Facebook Live. The public could also request assistance to participate in the Survey or Public Forum by contacting PennDOT's Program Center by email or phone. All public feedback received was reviewed and compiled to convey current transportation priorities and trends statewide and regionally for the benefit of the Metropolitan and Rural Planning Organizations (MPOs and RPOs) across the commonwealth.

Transportation Issues Identified







Statewide, survey participants mapped about **4,250** transportation concerns, **19** of these are located within the SVATS region.

“ There is no public transit available for northern Mercer County. ”
 Local Survey Participant



Number of Issues Identified

The icons below correspond with the same color dots on the map.

- 
9
 ROADWAY
- 
2
 BRIDGE
- 
0
 BIKING/
 WALKING
- 
7
 TRANSIT
- 
1
 FREIGHT
- 
0
 CONCERN(S)
 ALREADY
 ADDRESSED



2025 12-Year Program Update: Regional Transportation Survey Summary
SHENANGO VALLEY AREA TRANSPORTATION STUDY
METROPOLITAN PLANNING ORGANIZATION (SVATS)

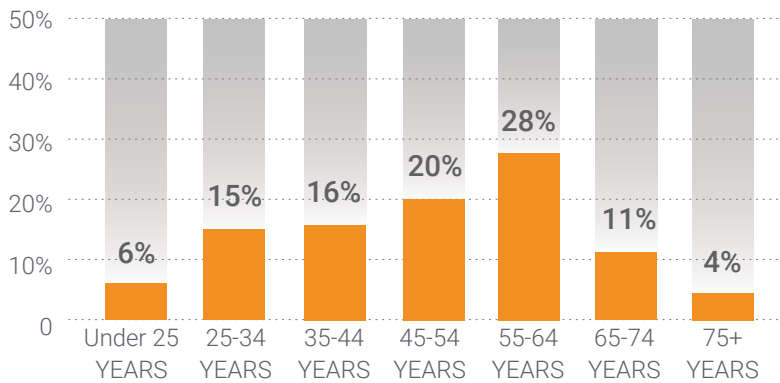
State Transportation
Commission

ABOUT THE SURVEY PARTICIPANTS IN YOUR REGION

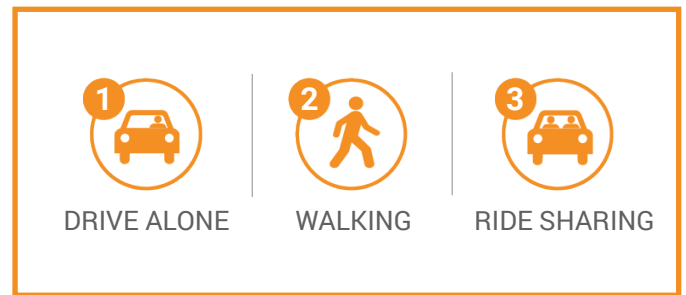
Over 10,000 individuals participated in the survey statewide, and **76** of the survey participants identified with the **SVATS region** through feedback provided. Learn more about the participants from this region.

Male	29	39%
Female	44	60%
Third gender/Nonconforming	0	0%
I prefer to self-describe	0	0%
I prefer not to answer	1	1%

Age



Top Transportation Modes



Transportation Priorities Ranking

- ROAD PAVEMENT**
Repairing, restoring, reconstructing, and maintaining Pennsylvania's 120,000 miles of state and local roadways to improve your travel
- BRIDGES**
Repairing, replacing, and maintaining Pennsylvania's 31,000 state and local bridges
- INTERSTATE HIGHWAY**
Specific, prioritized investments in reconstructing Pennsylvania's 1,868 miles of interstate highway
- TRANSIT**
Accessible and timely public transportation that covers an extensive service area and crosses regions
- TRAFFIC FLOW**
Using technology to improve traffic flow and construction of new roads and additional travel lanes to safely move people and goods more efficiently
- WALKING**
Accessible and connected routes to get you where you need to go safely
- BICYCLING**
Safe bicycle routes and facilities throughout the commonwealth to get you where you need to go
- FREIGHT**
Modern highways, railways, airports, and waterways to support the economy and ensure the efficient movement of goods and services
- PASSENGER RAIL**
Intercity and commuter rail service across Pennsylvania with out-of-state connections
- AVIATION**
Modern facilities, operations, and a wide range of commercial airline choices at airports