



State Transportation
Commission

2025 12-Year Program Update: Regional Transportation Survey Summary

SOUTHERN ALLEGHENIES PLANNING AND DEVELOPMENT COMMISSION (SAP & DC)

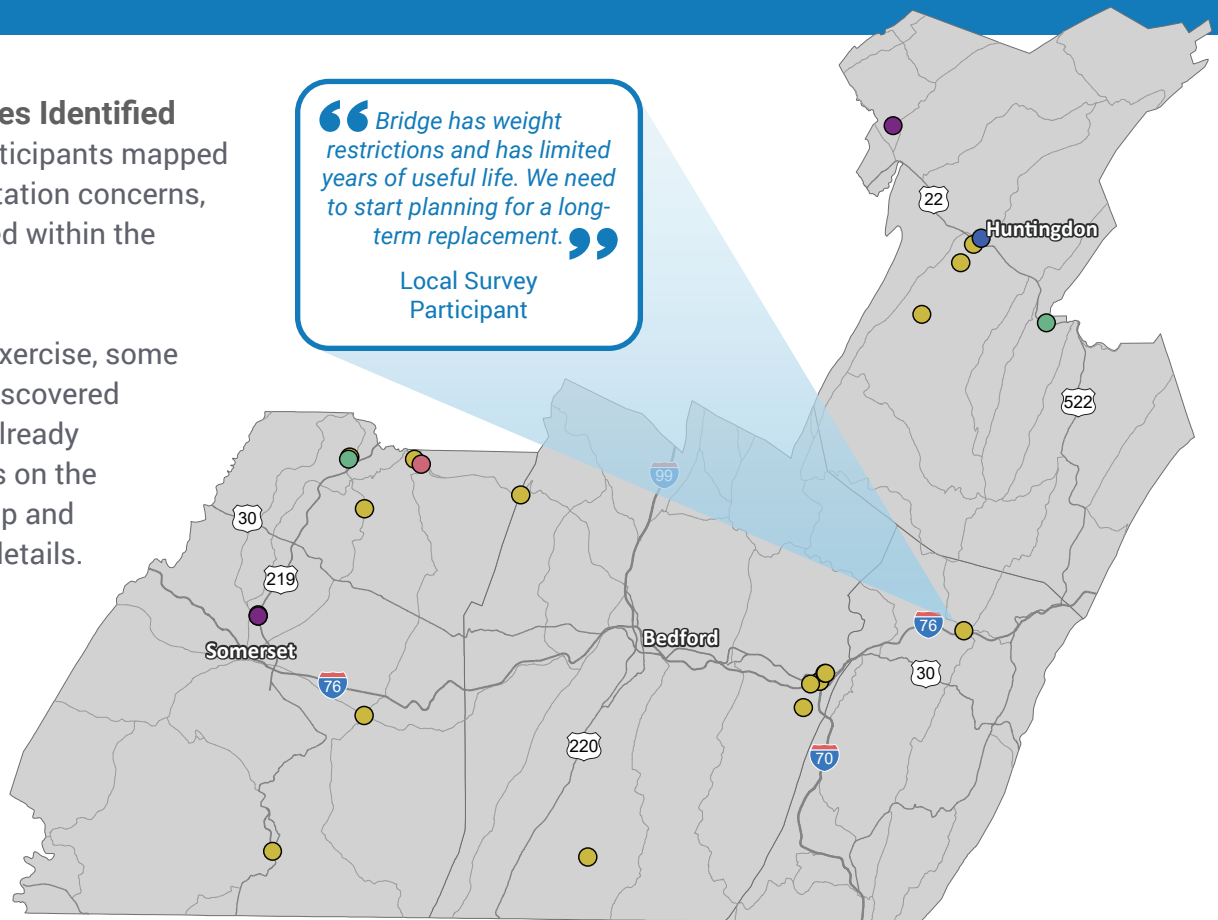
A CLOSER LOOK AT YOUR REGION

The State Transportation Commission held a 60-day Public Comment Period for the 2025 12-Year Program (TYP) Update from March 1, through April 30, 2023. The public was invited to provide input through taking the Transportation Survey and participating in an Online Public Forum. The Online Public Forum, held on Wednesday, April 12, was broadcasted on a webinar platform with a call-in option, and on Facebook Live. The public could also request assistance to participate in the Survey or Public Forum by contacting PennDOT's Program Center by email or phone. All public feedback received was reviewed and compiled to convey current transportation priorities and trends statewide and regionally for the benefit of the Metropolitan and Rural Planning Organizations (MPOs and RPOs) across the commonwealth.

Transportation Issues Identified

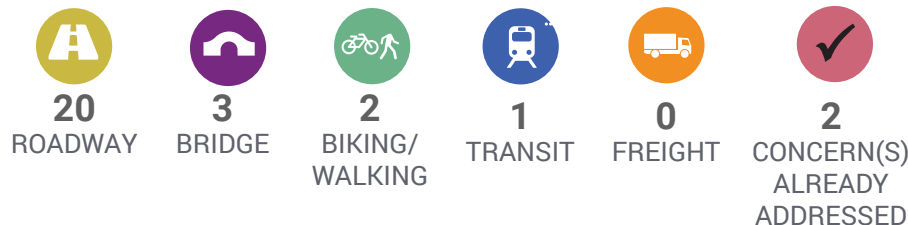
Statewide, survey participants mapped about **4,250** transportation concerns, **26** of these are located within the SAP & DC region.

During the mapping exercise, some survey participants discovered their concerns were already addressed by projects on the 2023 TYP. See the map and data below for more details.



Number of Issues Identified

The icons below correspond with the same color dots on the map.



Examples of a 2023 TYP Project that Addressed Public Concerns

24TH STREET BRIDGE REPLACEMENT

SR 2004 FREEDOM CRIDER ROAD REALIGNMENT



2025 12-Year Program Update: Regional Transportation Survey Summary
SOUTHERN ALLEGHENIES PLANNING AND DEVELOPMENT COMMISSION (SAP & DC)

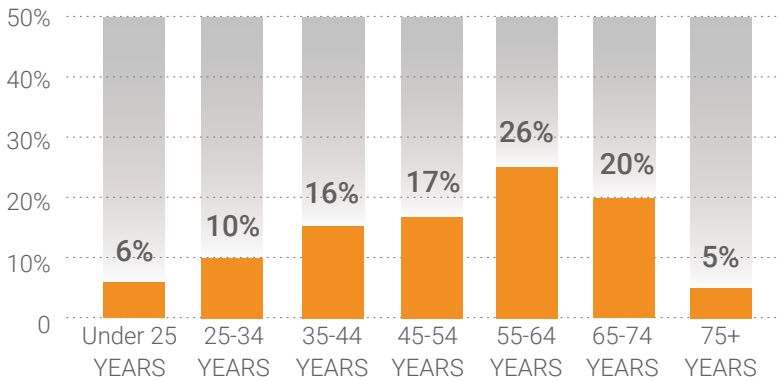
State Transportation Commission

ABOUT THE SURVEY PARTICIPANTS IN YOUR REGION

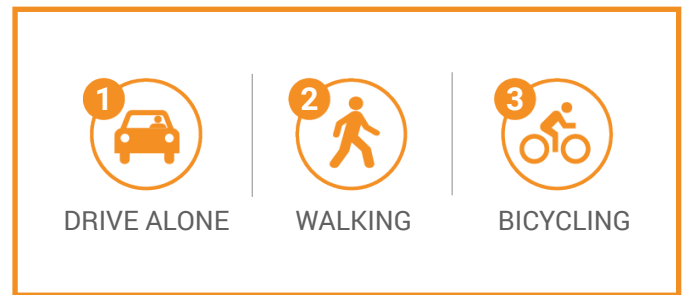
Over 10,000 individuals participated in the survey statewide, and **112** of the survey participants identified with the **SAP & DC region** through feedback provided. Learn more about the participants from this region.

Male	46	46%
Female	50	49%
Third gender/Nonconforming	2	2%
I prefer to self-describe	0	0%
I prefer not to answer	3	3%

Age



Top Transportation Modes



Transportation Priorities Ranking

- ROAD PAVEMENT**
Repairing, restoring, reconstructing, and maintaining Pennsylvania's 120,000 miles of state and local roadways to improve your travel
- BRIDGES**
Repairing, replacing, and maintaining Pennsylvania's 31,000 state and local bridges
- INTERSTATE HIGHWAY**
Specific, prioritized investments in reconstructing Pennsylvania's 1,868 miles of interstate highway
- TRAFFIC FLOW**
Using technology to improve traffic flow and construction of new roads and additional travel lanes to safely move people and goods more efficiently
- BICYCLING**
Safe bicycle routes and facilities throughout the commonwealth to get you where you need to go
- WALKING**
Accessible and connected routes to get you where you need to go safely
- FREIGHT**
Modern highways, railways, airports, and waterways to support the economy and ensure the efficient movement of goods and services
- PASSENGER RAIL**
Intercity and commuter rail service across Pennsylvania with out-of-state connections
- TRANSIT**
Accessible and timely public transportation that covers an extensive service area and crosses regions
- AVIATION**
Modern facilities, operations, and a wide range of commercial airline choices at airports