



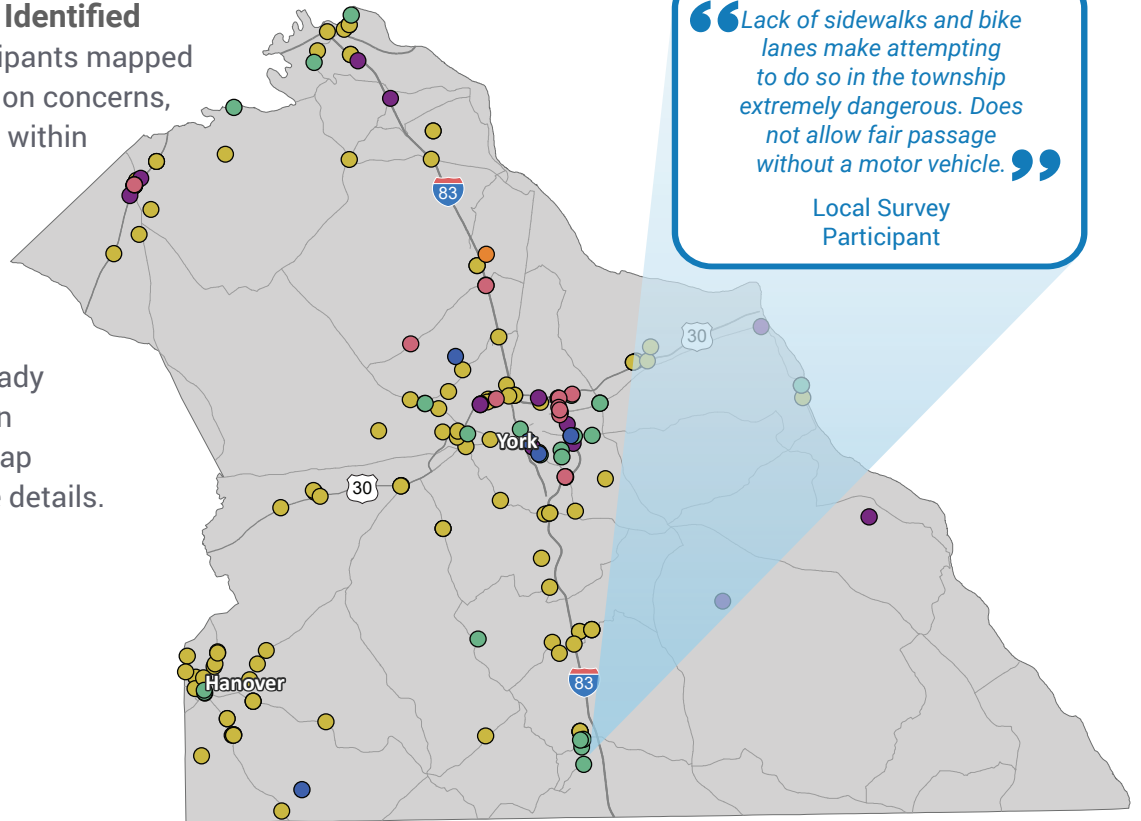
## A CLOSER LOOK AT YOUR REGION

The State Transportation Commission held a 60-day Public Comment Period for the 2025 12-Year Program (TYP) Update from March 1, through April 30, 2023. The public was invited to provide input through taking the Transportation Survey and participating in an Online Public Forum. The Online Public Forum, held on Wednesday, April 12, was broadcasted on a webinar platform with a call-in option, and on Facebook Live. The public could also request assistance to participate in the Survey or Public Forum by contacting PennDOT's Program Center by email or phone. All public feedback received was reviewed and compiled to convey current transportation priorities and trends statewide and regionally for the benefit of the Metropolitan and Rural Planning Organizations (MPOs and RPOs) across the commonwealth.

### Transportation Issues Identified

Statewide, survey participants mapped about **4,250** transportation concerns, **179** of these are located within the **YAMPO region**.

During the mapping exercise, some survey participants discovered their concerns were already addressed by projects on the 2023 TYP. See the map and data below for more details.

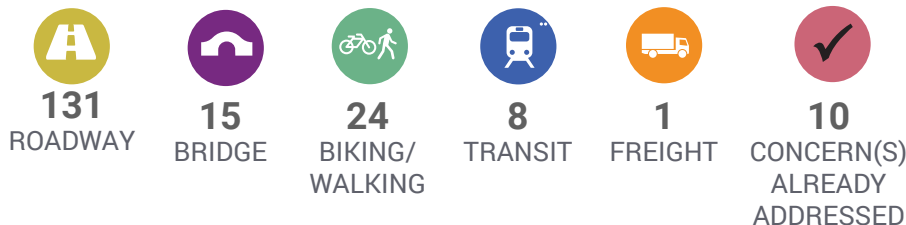


“Lack of sidewalks and bike lanes make attempting to do so in the township extremely dangerous. Does not allow fair passage without a motor vehicle.”

Local Survey Participant

### Number of Issues Identified

The icons below correspond with the same color dots on the map.



### Examples of a 2023 TYP Project that Addressed Public Concerns

- I-83 NORTH YORK WIDENING #1 (EXIT 19)
- YORK SERVICE PATROL
- US 30: PA 74 TO NORTH GEORGE STREET RESTORATION

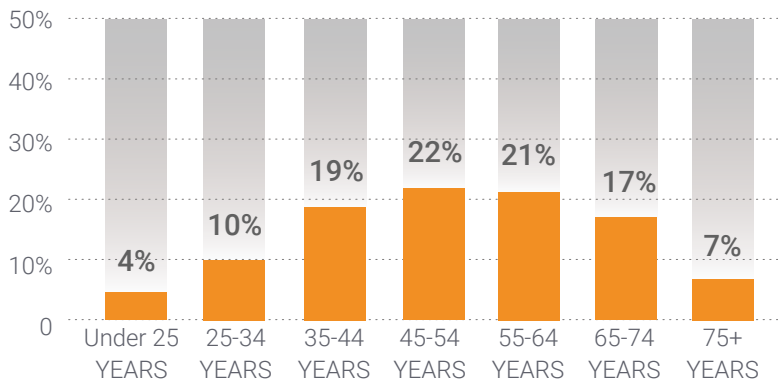


## ABOUT THE SURVEY PARTICIPANTS IN YOUR REGION

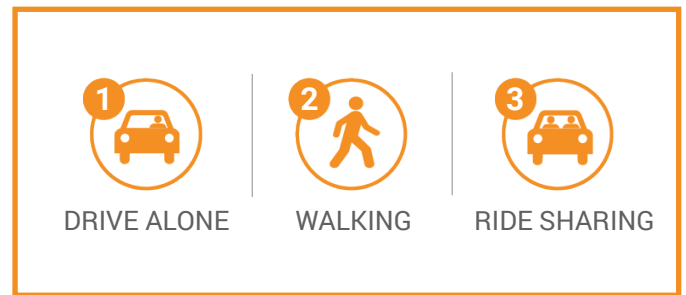
Over 10,000 individuals participated in the survey statewide, and **325** of the survey participants identified with the **YAMPO region** through feedback provided. Learn more about the participants from this region.

Male	131	43%
Female	157	52%
Third gender/Nonconforming	2	1%
I prefer to self-describe	0	0%
I prefer not to answer	14	4%

### Age



### Top Transportation Modes



### Transportation Priorities Ranking

- ROAD PAVEMENT**  
Repairing, restoring, reconstructing, and maintaining Pennsylvania's 120,000 miles of state and local roadways to improve your travel
- TRAFFIC FLOW**  
Using technology to improve traffic flow and construction of new roads and additional travel lanes to safely move people and goods more efficiently
- BRIDGES**  
Repairing, replacing, and maintaining Pennsylvania's 31,000 state and local bridges
- INTERSTATE HIGHWAY**  
Specific, prioritized investments in reconstructing Pennsylvania's 1,868 miles of interstate highway
- WALKING**  
Accessible and connected routes to get you where you need to go safely
- FREIGHT**  
Modern highways, railways, airports, and waterways to support the economy and ensure the efficient movement of goods and services
- PASSENGER RAIL**  
Intercity and commuter rail service across Pennsylvania with out-of-state connections
- BICYCLING**  
Safe bicycle routes and facilities throughout the commonwealth to get you where you need to go
- TRANSIT**  
Accessible and timely public transportation that covers an extensive service area and crosses regions
- AVIATION**  
Modern facilities, operations, and a wide range of commercial airline choices at airports