



2027 12-Year Program Update: Regional Transportation Survey Summary

NORTHWEST RURAL PLANNING ORGANIZATION (NORTHWEST RPO)

State Transportation
Commission

A CLOSER LOOK AT YOUR REGION

The State Transportation Commission held a 60-day Public Comment Period for the update of the 2027 12-Year Program (TYP) from March 3 through April 30, 2025. The public was invited to provide input through taking the Transportation Survey and participating in an Online Public Forum, which was broadcast live on PAcast and Facebook Live on Thursday, April 10. The public also had the option to request assistance to participate in the Survey or Online Public Forum by contacting PennDOT's Program Center. All public feedback received was reviewed and compiled to better understand current transportation priorities and trends regionally and statewide.

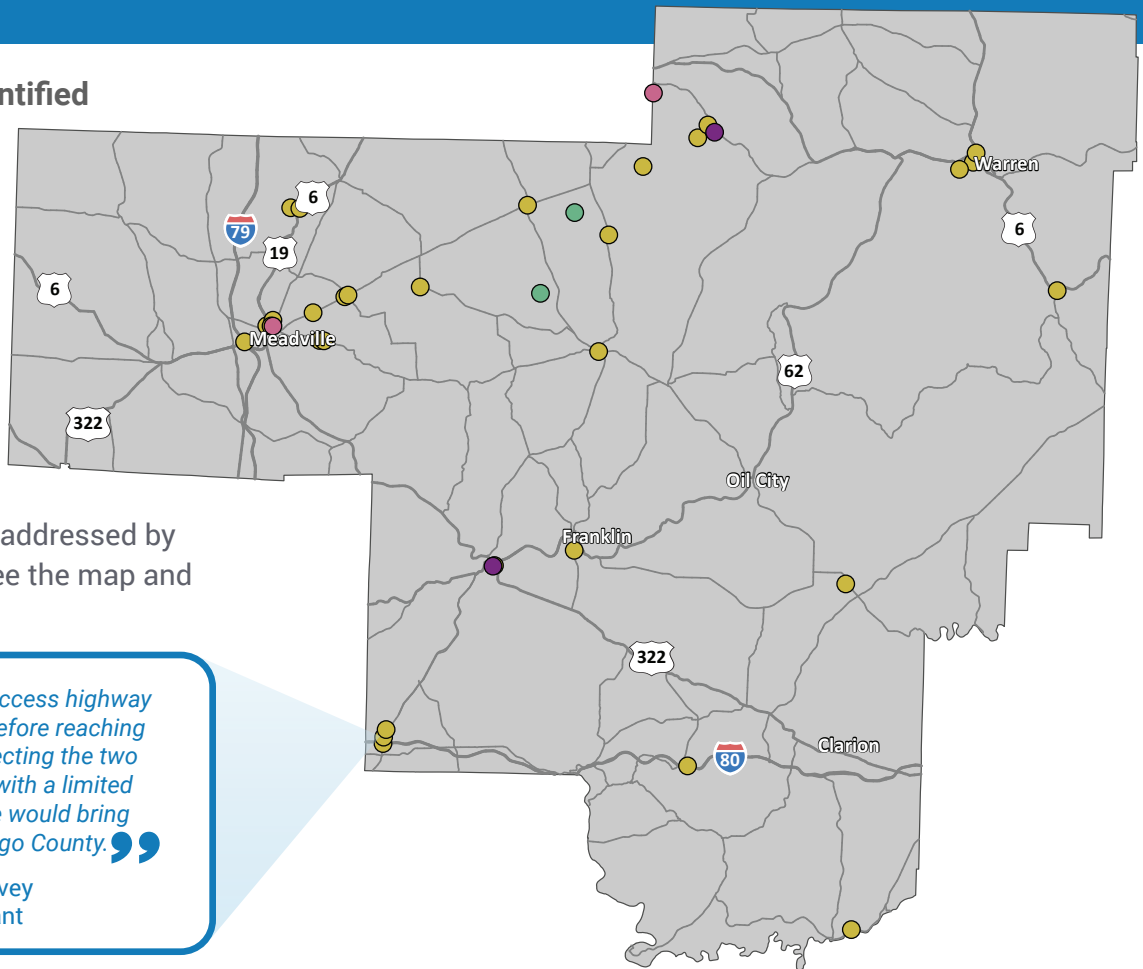
Transportation Issues Identified

Statewide, survey participants mapped **3,710** transportation concerns, **36** of these are located within the **Northwest RPO region**.

During the mapping exercise, some survey participants discovered their concerns were already addressed by projects on the 2025 TYP. See the map and data below for more details.

“A section of limited access highway stops abruptly just before reaching Interstate 80. Connecting the two highways together with a limited access interchange would bring tourism to Venango County.”

Local Survey
Participant



Number of Issues Identified

The icons below correspond with the same color dots on the map.

					
31	3	2	0	0	2
ROADWAY	BRIDGE	BIKING/ WALKING	TRANSIT	FREIGHT	CONCERN(S) ALREADY ADDRESSED

Examples of a 2025 TYP Project that Addressed Public Concerns

ALLEGHENY COLLEGE SAFETY
IMPROVEMENTS

STEWART RD (T-639) BRIDGE



2027 12-Year Program Update: Regional Transportation Survey Summary

NORTHWEST RURAL PLANNING ORGANIZATION (NORTHWEST RPO)

State Transportation
Commission

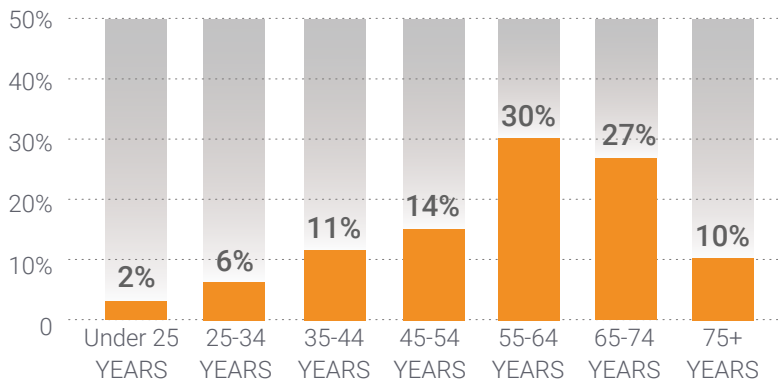
ABOUT THE SURVEY PARTICIPANTS IN YOUR REGION

Over 9,150 individuals participated in the survey statewide, and **69** of the survey participants identified with the **Northwest RPO region** through feedback provided. Learn more about the participants from this region.

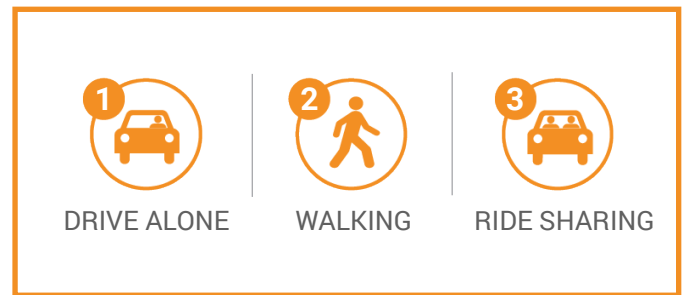
Male	36	57%
Female	27	43%
Third gender/Nonconforming	0	0%
I prefer to self-describe	0	0%
I prefer not to answer	0	0%

Responses to demographics questions were optional.

Age



Top Transportation Modes



Transportation Priorities Ranking

- ROAD PAVEMENT**
Repairing, restoring, reconstructing, and maintaining Pennsylvania's 120,000 miles of state and local roadways to improve your travel
- BRIDGES**
Repairing, replacing, and maintaining Pennsylvania's 31,000 state and local bridges
- INTERSTATE HIGHWAY**
Specific, prioritized investments in reconstructing Pennsylvania's 1,868 miles of interstate highway
- TRAFFIC FLOW**
Using technology to improve traffic flow and construction of new roads and additional travel lanes to safely move people and goods more efficiently
- WALKING**
Accessible and connected routes to get you where you need to go safely
- FREIGHT**
Modern highways, railways, airports, and waterways to support the economy and ensure the efficient movement of goods and services
- TRANSIT**
Accessible and timely public transportation that covers an extensive service area and crosses regions
- BICYCLING**
Safe bicycle routes and facilities throughout the commonwealth to get you where you need to go
- AVIATION**
Modern facilities, operations, and a wide range of commercial airline choices at airports
- PASSENGER RAIL**
Intercity and commuter rail service across Pennsylvania with out-of-state connections



Pennsylvania
Department of Transportation

🌐 [TalkPATransportation.com](https://www.talkpatransportation.com)
📞 717.783.2262
✉️ RA-PennDOTSTC@pa.gov

📍 Office of the State Transportation Commission
and Transportation Advisory Committee
P.O. Box 3365 | Harrisburg, PA 17105