



## A CLOSER LOOK AT YOUR REGION

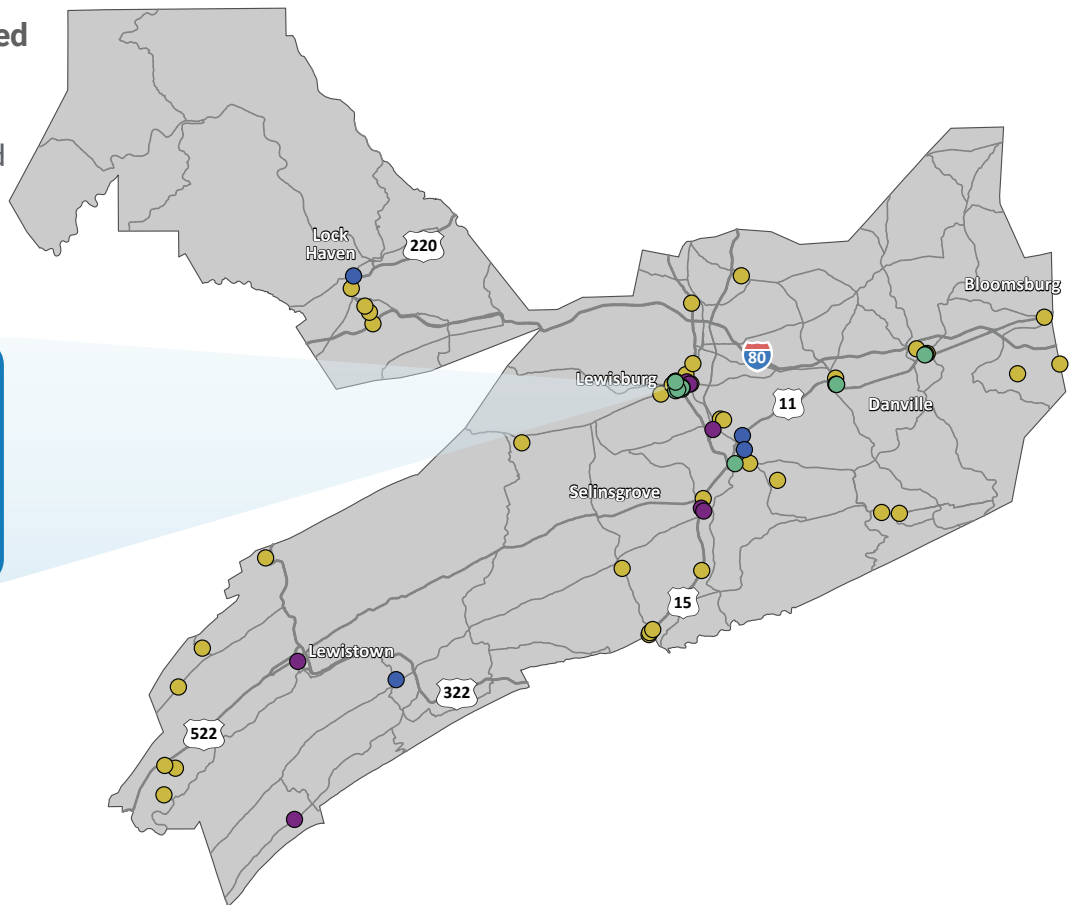
The State Transportation Commission held a 60-day Public Comment Period for the update of the 2027 12-Year Program (TYP) from March 3 through April 30, 2025. The public was invited to provide input through taking the Transportation Survey and participating in an Online Public Forum, which was broadcast live on PAcast and Facebook Live on Thursday, April 10. The public also had the option to request assistance to participate in the Survey or Online Public Forum by contacting PennDOT's Program Center. All public feedback received was reviewed and compiled to better understand current transportation priorities and trends regionally and statewide.

### Transportation Issues Identified

Statewide, survey participants mapped **3,710** transportation concerns, **86** of these are located within the **SEDA-Council of Governments MPO region**.

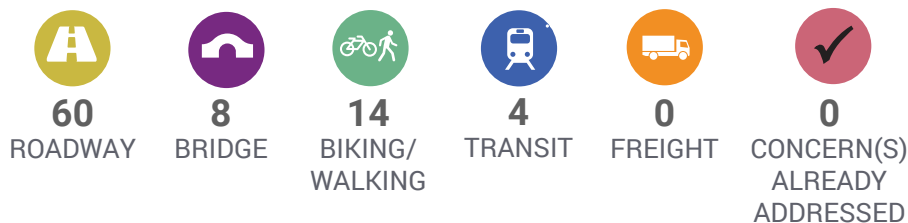
“Pedestrians and bikes are already using this area to cross US Route 15. A formal crossing needs to be created.”

Local Survey  
Participant



### Number of Issues Identified

The icons below correspond with the same color dots on the map.





# 2027 12-Year Program Update: Regional Transportation Survey Summary

## SEDA-COUNCIL OF GOVERNMENTS (SEDA-COG)

State Transportation  
Commission

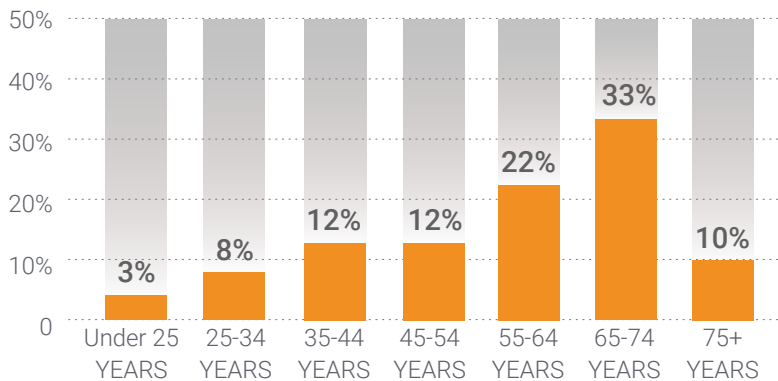
### ABOUT THE SURVEY PARTICIPANTS IN YOUR REGION

Over 9,150 individuals participated in the survey statewide, and **132** of the survey participants identified with the **SEDA-Council of Governments region** through feedback provided. Learn more about the participants from this region.

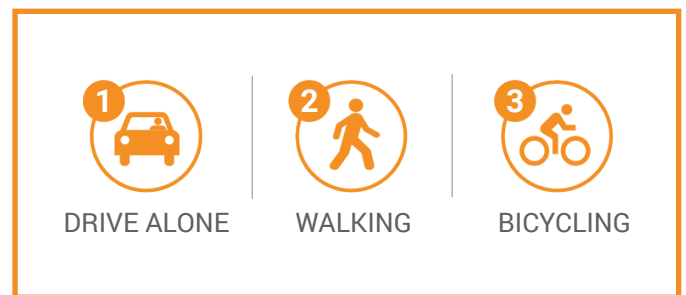
Male	51	49%
Female	44	42%
Third gender/Nonconforming	0	0%
I prefer to self-describe	0	0%
I prefer not to answer	10	9%

*Responses to demographics questions were optional.*

#### Age



#### Top Transportation Modes



#### Transportation Priorities Ranking

- ROAD PAVEMENT**  
Repairing, restoring, reconstructing, and maintaining Pennsylvania's 120,000 miles of state and local roadways to improve your travel
- BRIDGES**  
Repairing, replacing, and maintaining Pennsylvania's 31,000 state and local bridges
- TRAFFIC FLOW**  
Using technology to improve traffic flow and construction of new roads and additional travel lanes to safely move people and goods more efficiently
- INTERSTATE HIGHWAY**  
Specific, prioritized investments in reconstructing Pennsylvania's 1,868 miles of interstate highway
- WALKING**  
Accessible and connected routes to get you where you need to go safely
- BICYCLING**  
Safe bicycle routes and facilities throughout the commonwealth to get you where you need to go
- PASSENGER RAIL**  
Intercity and commuter rail service across Pennsylvania with out-of-state connections
- TRANSIT**  
Accessible and timely public transportation that covers an extensive service area and crosses regions
- FREIGHT**  
Modern highways, railways, airports, and waterways to support the economy and ensure the efficient movement of goods and services
- AVIATION**  
Modern facilities, operations, and a wide range of commercial airline choices at airports



Pennsylvania  
Department of Transportation

🌐 [TalkPATransportation.com](https://www.talkpatransportation.com)  
📞 717.783.2262  
✉️ [RA-PennDOTSTC@pa.gov](mailto:RA-PennDOTSTC@pa.gov)

📍 Office of the State Transportation Commission  
and Transportation Advisory Committee  
P.O. Box 3365 | Harrisburg, PA 17105