



A CLOSER LOOK AT YOUR REGION

The State Transportation Commission held a 60-day Public Comment Period for the update of the 2027 12-Year Program (TYP) from March 3 through April 30, 2025. The public was invited to provide input through taking the Transportation Survey and participating in an Online Public Forum, which was broadcast live on PAcast and Facebook Live on Thursday, April 10. The public also had the option to request assistance to participate in the Survey or Online Public Forum by contacting PennDOT's Program Center. All public feedback received was reviewed and compiled to better understand current transportation priorities and trends regionally and statewide.

Transportation Issues Identified

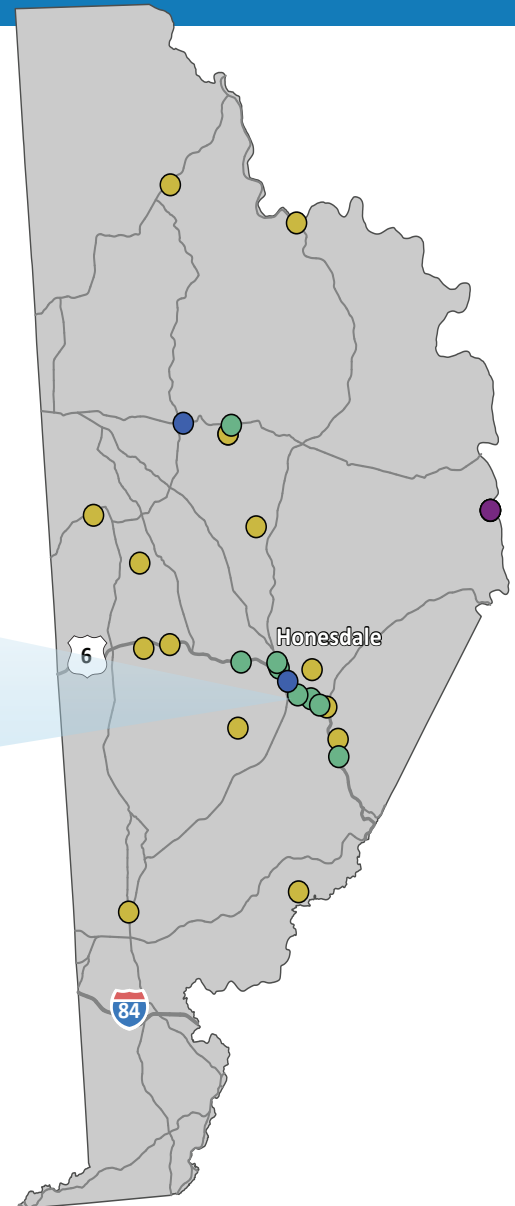
Statewide, survey participants mapped **3,710** transportation concerns, **30** of these are located within the **Wayne County region**.

“Between downtown Honesdale Tryon Street and the nearby commercial plaza in Texas Township, there are no dedicated pedestrian spaces.”

Local Survey Participant

Number of Issues Identified

The icons below correspond with the same color dots on the map.





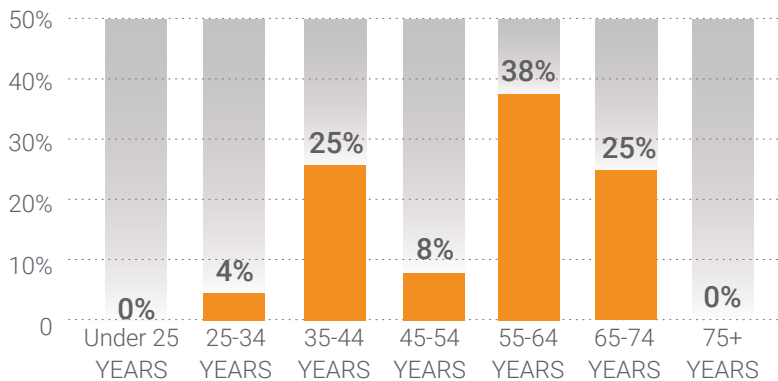
ABOUT THE SURVEY PARTICIPANTS IN YOUR REGION

Over 9,150 individuals participated in the survey statewide, and **40** of the survey participants identified with the **Wayne County region** through feedback provided. Learn more about the participants from this region.

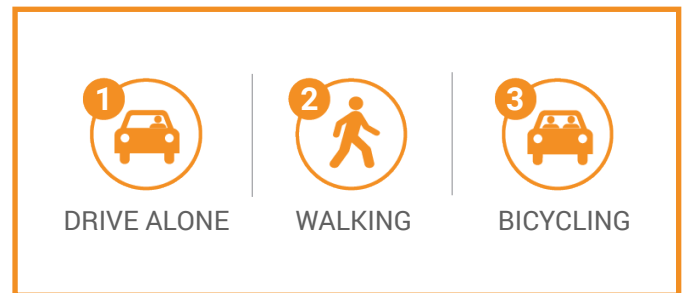
Male	8	33%
Female	15	63%
Third gender/Nonconforming	0	0%
I prefer to self-describe	1	4%
I prefer not to answer	0	0%

Responses to demographics questions were optional.

Age



Top Transportation Modes



Transportation Priorities Ranking

- ROAD PAVEMENT**
Repairing, restoring, reconstructing, and maintaining Pennsylvania's 120,000 miles of state and local roadways to improve your travel
- BRIDGES**
Repairing, replacing, and maintaining Pennsylvania's 31,000 state and local bridges
- WALKING**
Accessible and connected routes to get you where you need to go safely
- PASSENGER RAIL**
Intercity and commuter rail service across Pennsylvania with out-of-state connections
- INTERSTATE HIGHWAY**
Specific, prioritized investments in reconstructing Pennsylvania's 1,868 miles of interstate highway
- BICYCLING**
Safe bicycle routes and facilities throughout the commonwealth to get you where you need to go
- TRANSIT**
Accessible and timely public transportation that covers an extensive service area and crosses regions
- TRAFFIC FLOW**
Using technology to improve traffic flow and construction of new roads and additional travel lanes to safely move people and goods more efficiently
- AVIATION**
Modern facilities, operations, and a wide range of commercial airline choices at airports
- FREIGHT**
Modern highways, railways, airports, and waterways to support the economy and ensure the efficient movement of goods and services

